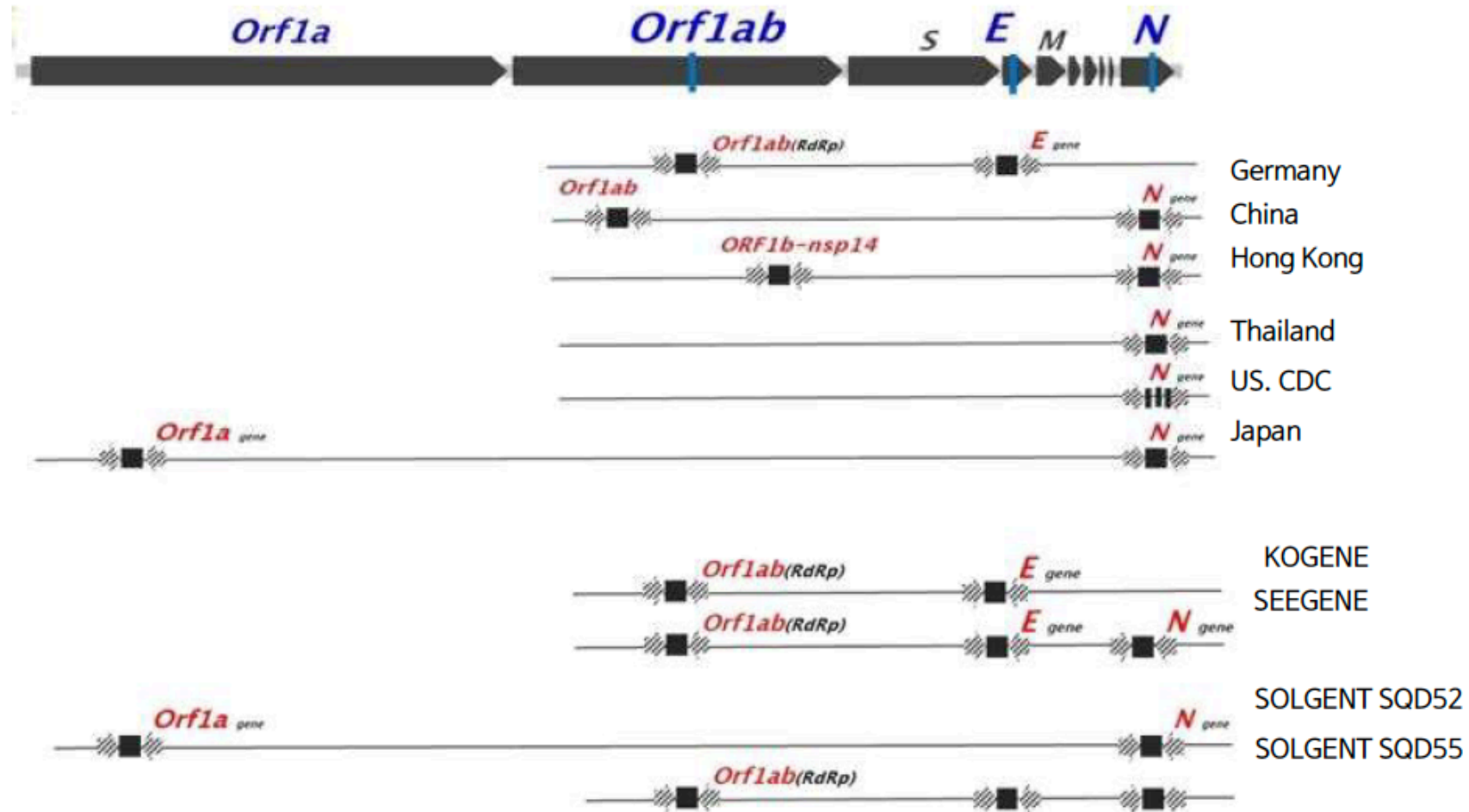
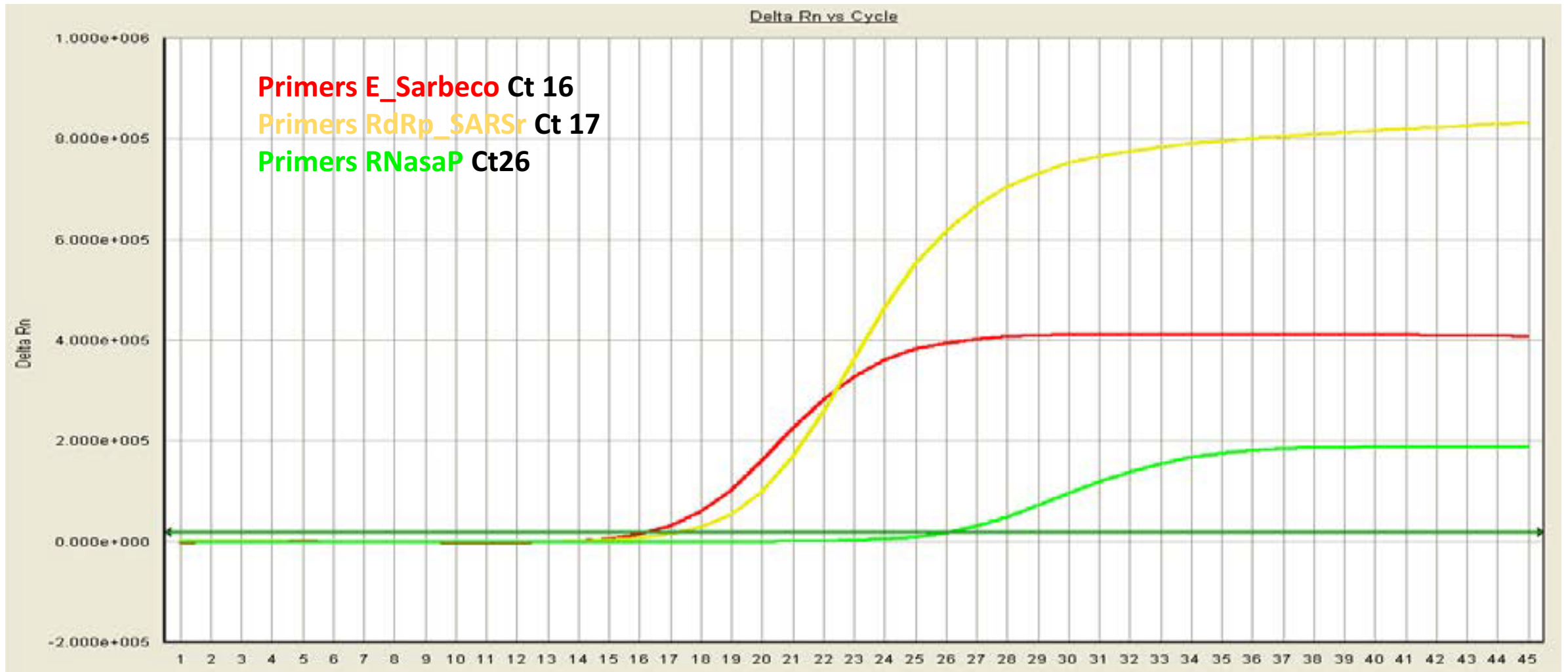


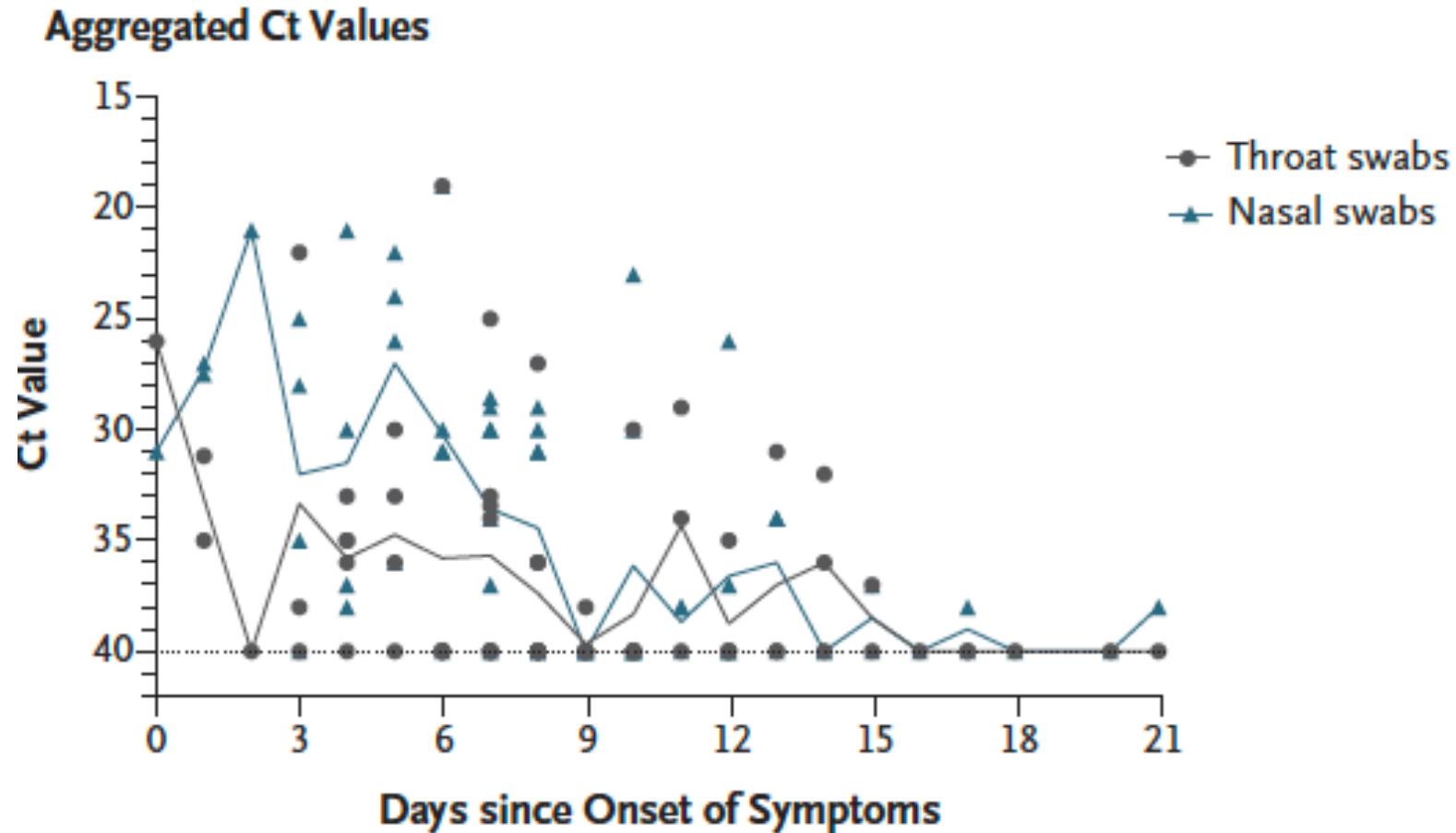
# Regions of the SARS-CoV-2 genome used for diagnosis



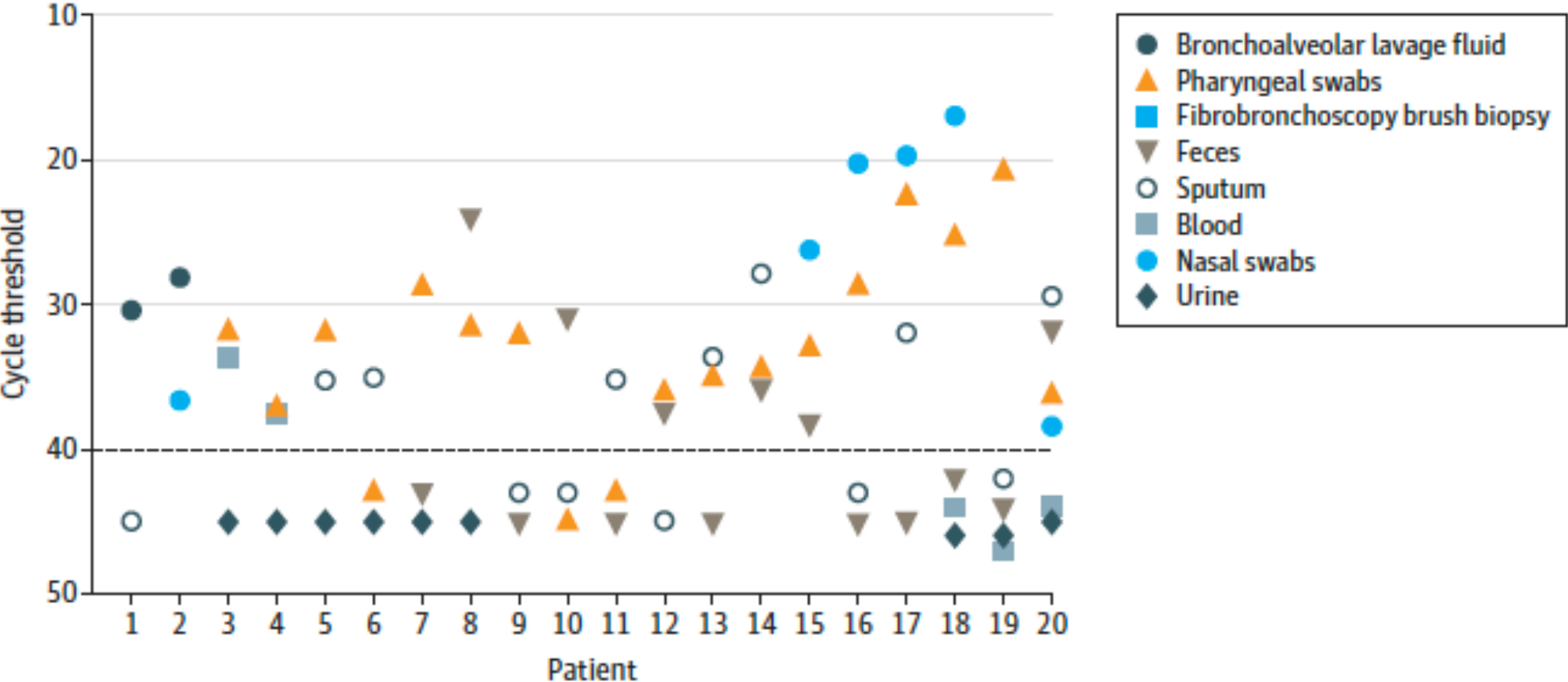
# Real time PCR graphics from a positive patient with SARS-CoV-2



# Viral Load detected in nasal and throat swabs in patients with SARS-CoV-2



# Distribution and shedding patterns among 20 hospitalized patients



**Table. Detection Results of Clinical Specimens by Real-Time Reverse Transcriptase–Polymerase Chain Reaction**

Specimens and values	Bronchoalveolar lavage fluid (n = 15)	Fibrobronchoscope brush biopsy (n = 13)	Sputum (n = 104)	Nasal swabs (n = 8)	Pharyngeal swabs (n = 398)	Feces (n = 153)	Blood (n = 307)	Urine (n = 72)
Positive test result, No. (%)	14 (93)	6 (46)	75 (72)	5 (63)	126 (32)	44 (29)	3 (1)	0
Cycle threshold, mean (SD)	31.1 (3.0)	33.8 (3.9)	31.1 (5.2)	24.3 (8.6)	32.1 (4.2)	31.4 (5.1)	34.6 (0.7)	ND
Range	26.4-36.2	26.9-36.8	18.4-38.8	16.9-38.4	20.8-38.6	22.3-38.4	34.1-35.4	
95% CI	28.9-33.2	29.8-37.9	29.3-33.0	13.7-35.0	31.2-33.1	29.4-33.5	0.0-36.4	

Abbreviation: ND, no data.

*JAMA*. Published online March 11, 2020. doi:10.1001/jama.2020.3786



[Logix Smart™ 2019-nCoV qPCR test \(CE-IVD\)](#)

[Co-Diagnostics](#)

[GeneFinder™ COVID-19 Plus RealAmp Kit \(CE-IVD\)](#)

[ELITech Group](#)

[1copy™ COVID-19 qPCR Kit \(CE-IVD\)](#)

[1drop](#)

[Roche cobas SARS-CoV-2 Test \(CE-IVD, FDA-EUA\)](#)

[Roche Diagnostics](#)

[genesig 2019-nCoV \(CE-IVD\)](#)

[sderdesign](#)

[2019-Novel Coronavirus Triplex RT-qPCR Kit \(CE-IVD\)](#)

[Vazyme Medical](#)

[Kewei COVID-19 Kit \(CE-IVD; RUO\)](#)

[Kewei Clinical Diagnostics](#)

[STANDARD M nCoV Real Time Kit \(Korea MFDS–EUA; CE-IVD\)](#)

[SD Biosensor](#)

[Q-Sens® 2019-nCoV Kit \(CE-IVD\)](#)

[CancerRop](#)

[Liferiver Novel Coronavirus Real Time Multiplex RT-PCR kit \(China FDA–EUA; CE-IVD\)](#)

[LifeRiver](#)

[Covid-19 Go-Strips](#)

[Biomeme](#)

[VitaPCR COVID-19  
assay](#)

[Credo Diagnostics](#)

[WizDx™ COVID-19  
CrystalMix PCR kit](#)

[Wizbiosolutions](#)