

Is the Future Female? Equality and the Mexican Left

May 11, 2020

 **CENTER FOR
U.S.-MEXICAN STUDIES**
UC San Diego School of
Global Policy & Strategy



"Is the Future Female? Equality and the Mexican Left"

Center for U.S.-Mexican Studies
University of California San Diego

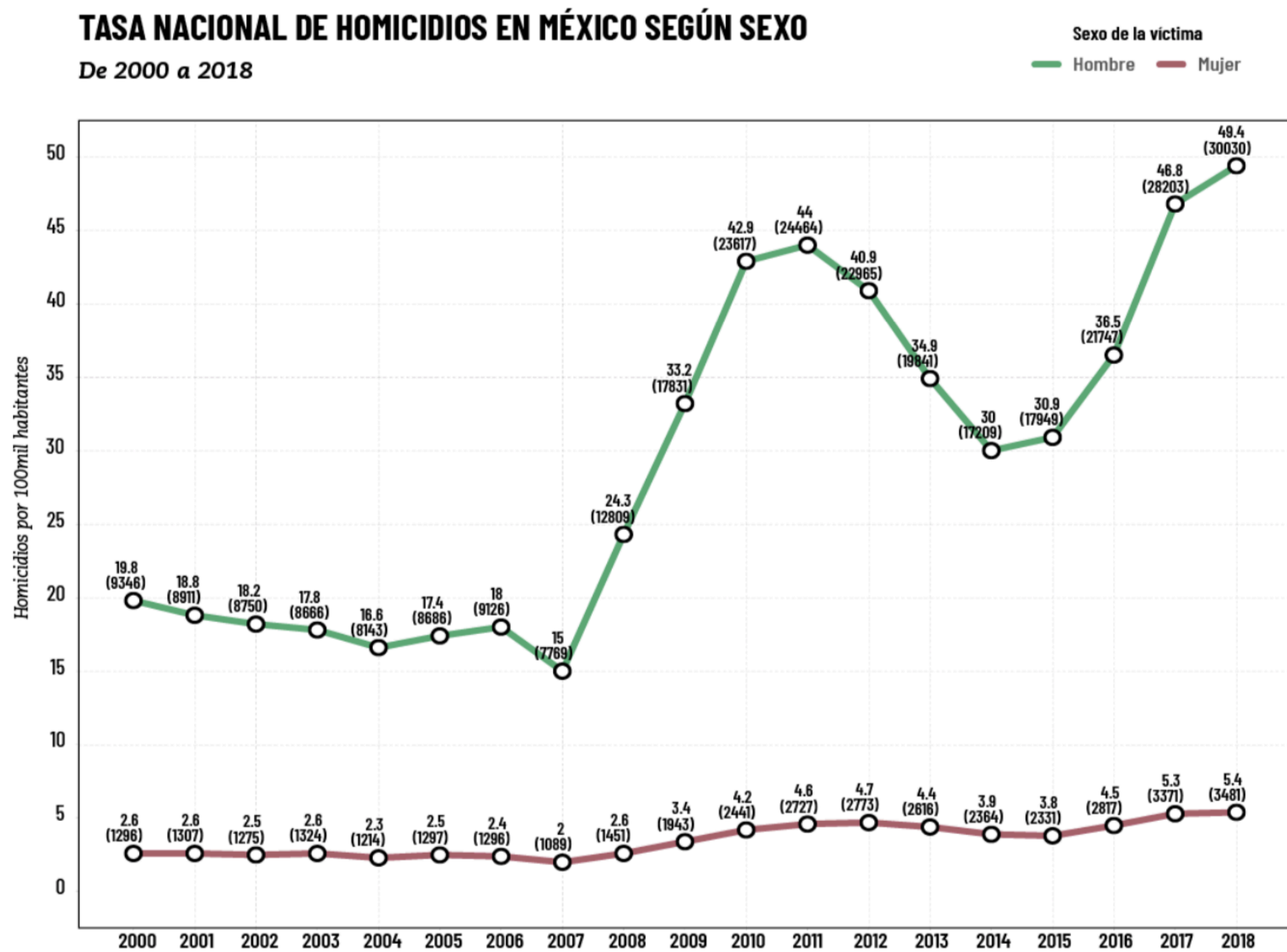
Mónica Meltis Véjar
monica.meltis@datacivica.org

@monicameltis

@datacivica



WHAT HAS CHANGED FROM 2000 TO

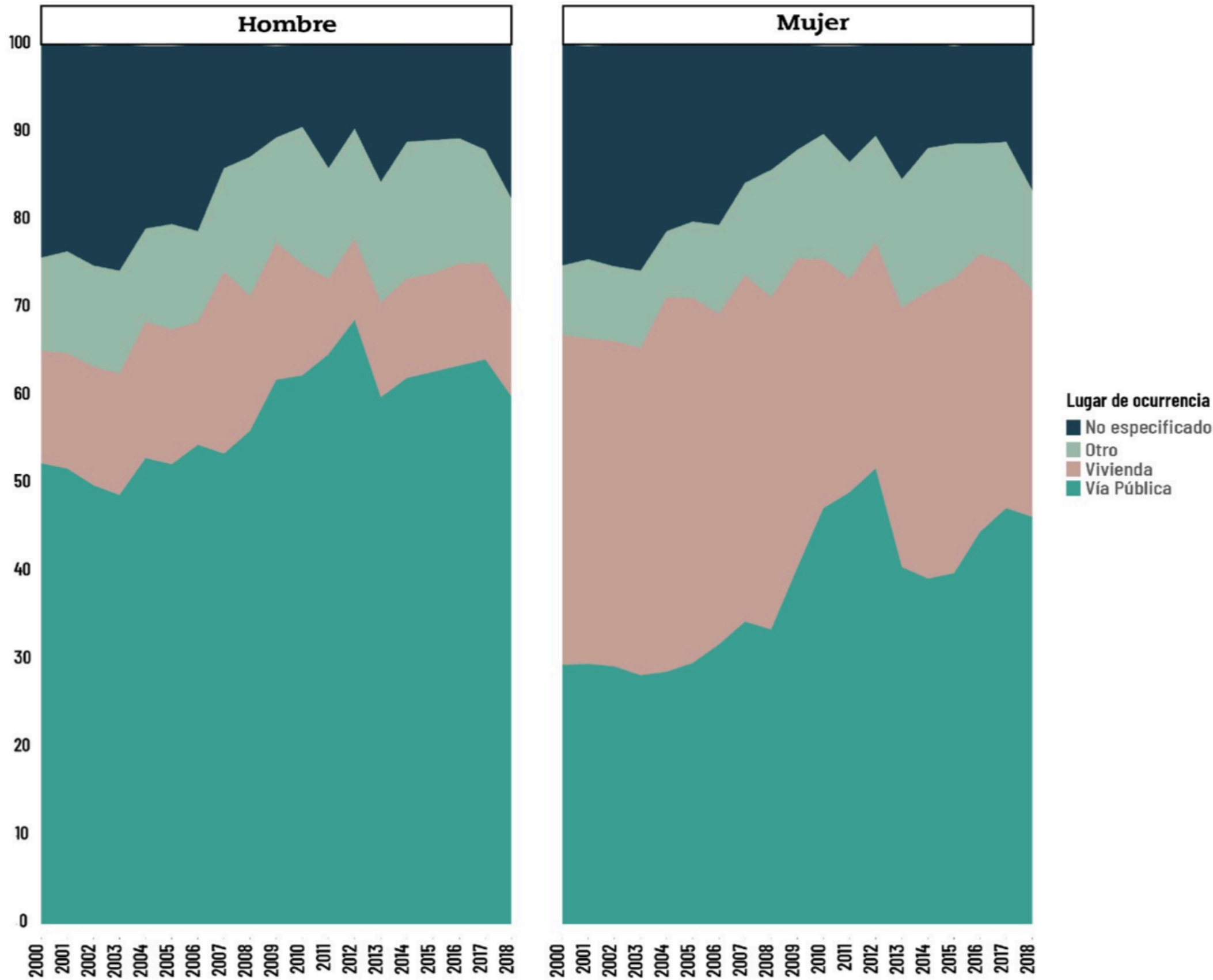


Fuente: Registros de Mortalidad INEGI, 2000-2018 y CONAPO; se utiliza año de ocurrencia de la defunción.
Se excluyen homicidios ocurridos fuera del país o en entidades no identificadas.

HOWEVER, THE
INCREASE WAS NOT
HOMOGENEOUS

**PORCENTAJE DE LOS HOMICIDIOS POR LUGAR DE OCURRENCIA,
SEXO DE LA VÍCTIMA Y GRUPO DE EDAD**

De 2000 a 2018



Fuente: Registros de Mortalidad INEGI, 2000-2018; se utiliza año de ocurrencia de la defunción.

For men, the public space has always been the place where most homicides occur.

.....

However, for women before 2009, the place where most homicides occur was their home.

The rate of homicides against women at home became

2

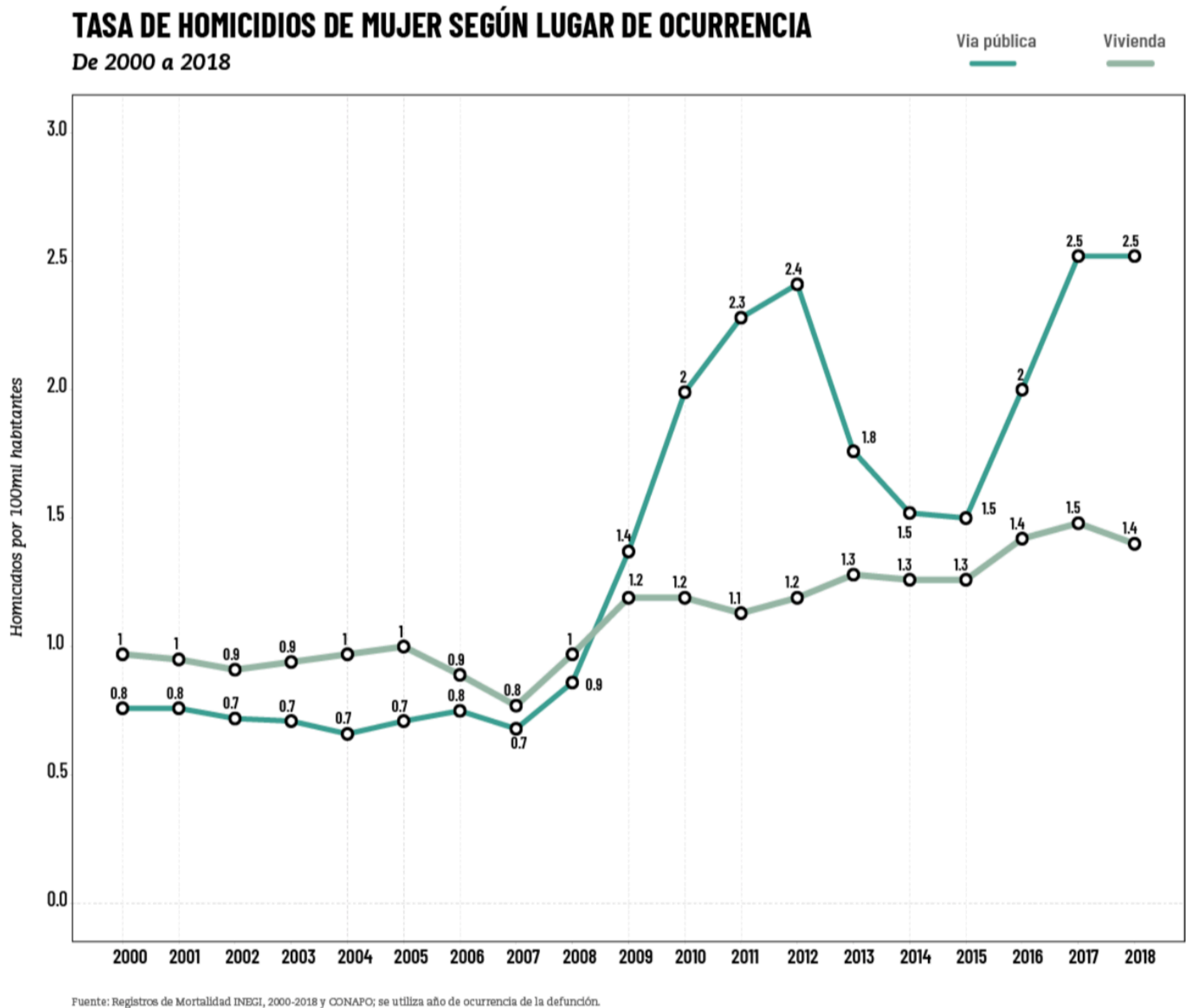
times higher

.....

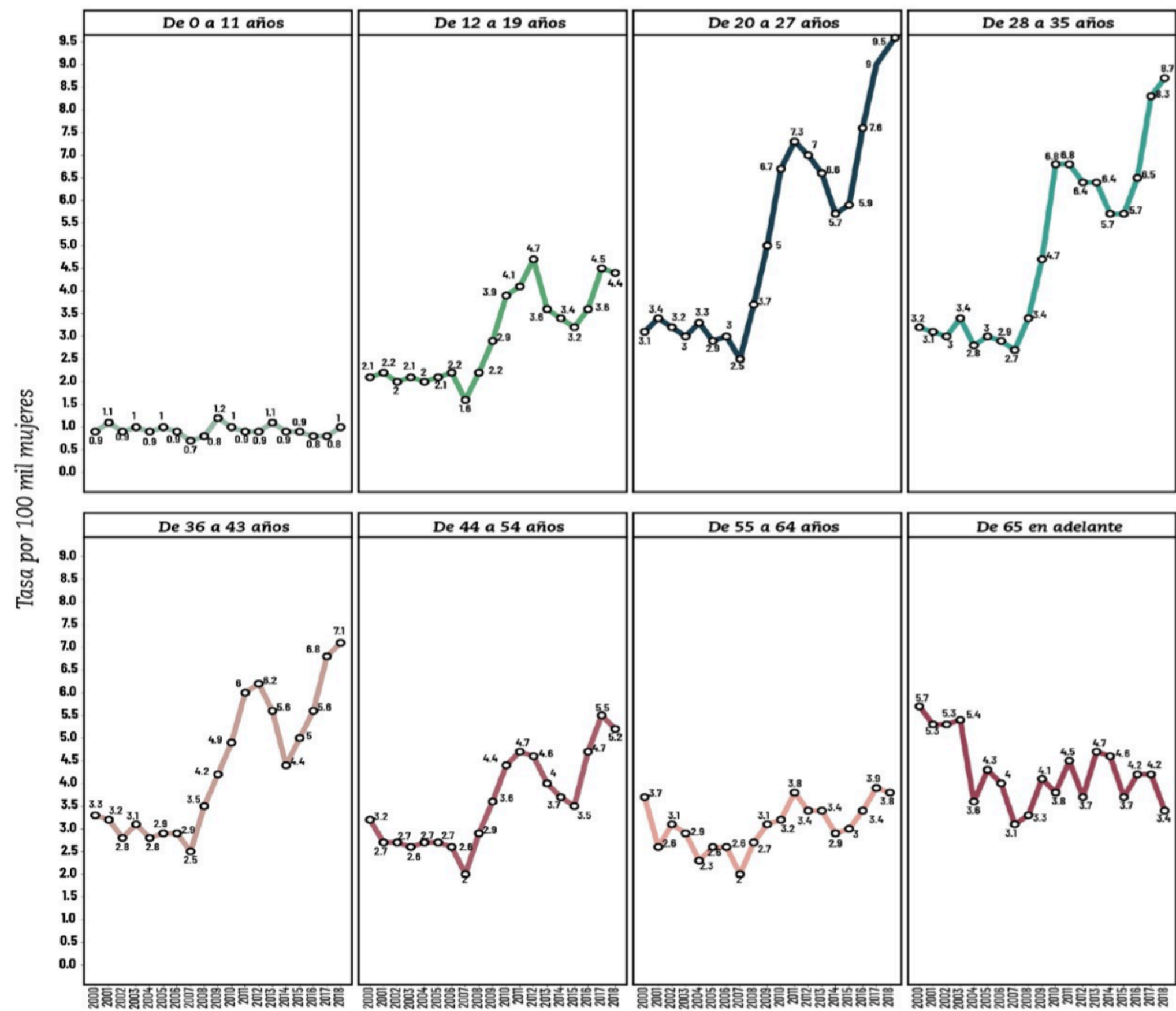
The rate of homicides against women in public space became

3.6

times higher



TASA DE HOMICIDIOS DE MUJER POR GRUPO DE EDAD
De 2000 a 2018



Fuente: Registros de Mortalidad INEGI, 2000-2018 y CONAPO; se utiliza año de ocurrencia de la defunción.

Between 2000 and 2018:

The rate of homicides against women aged 20-27 became

3.6

times higher

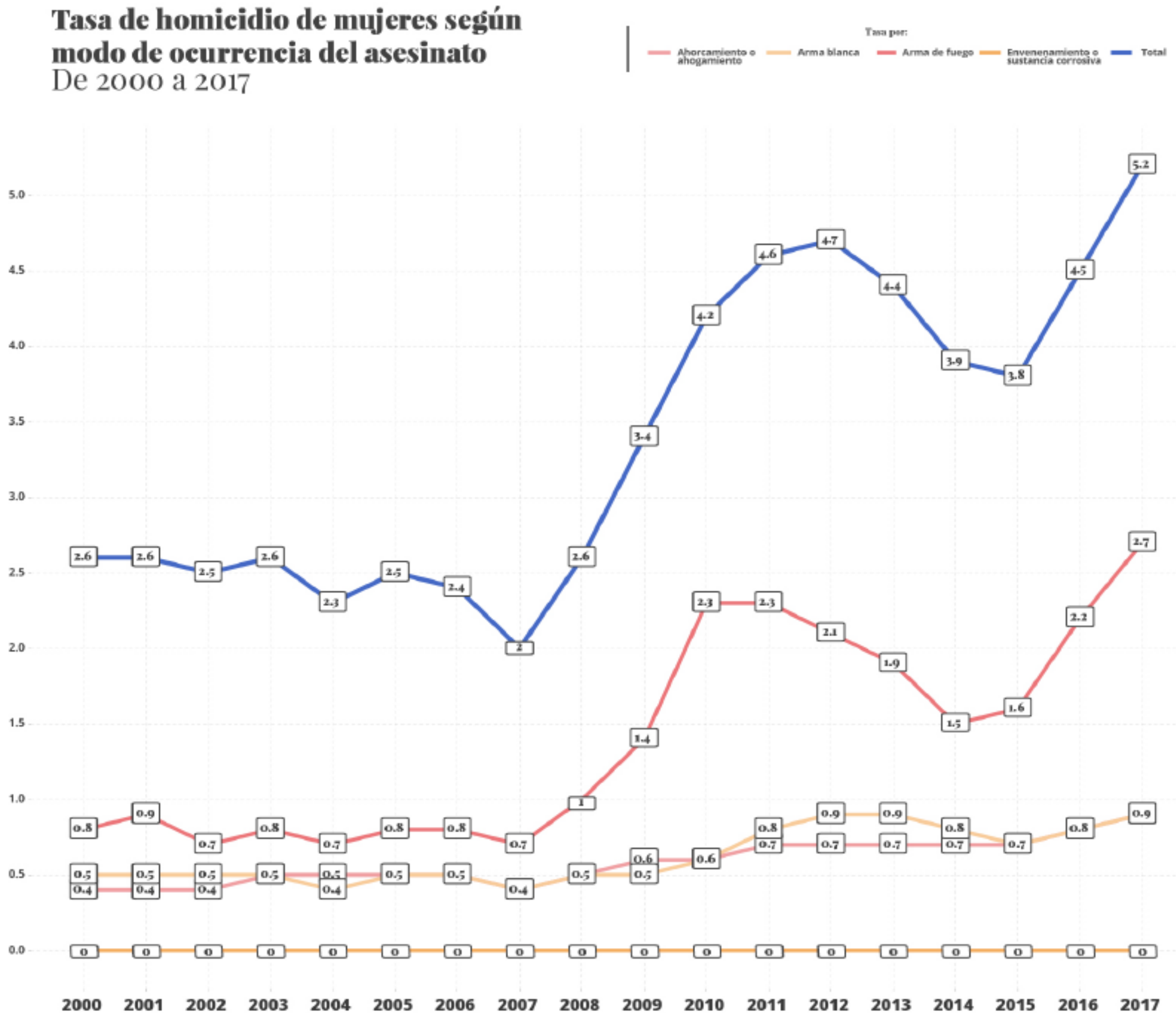
.....

The rate of homicides against women aged 28-35 became

3

times higher

The homicide rate
of women by
firearms became
3.8
times higher.

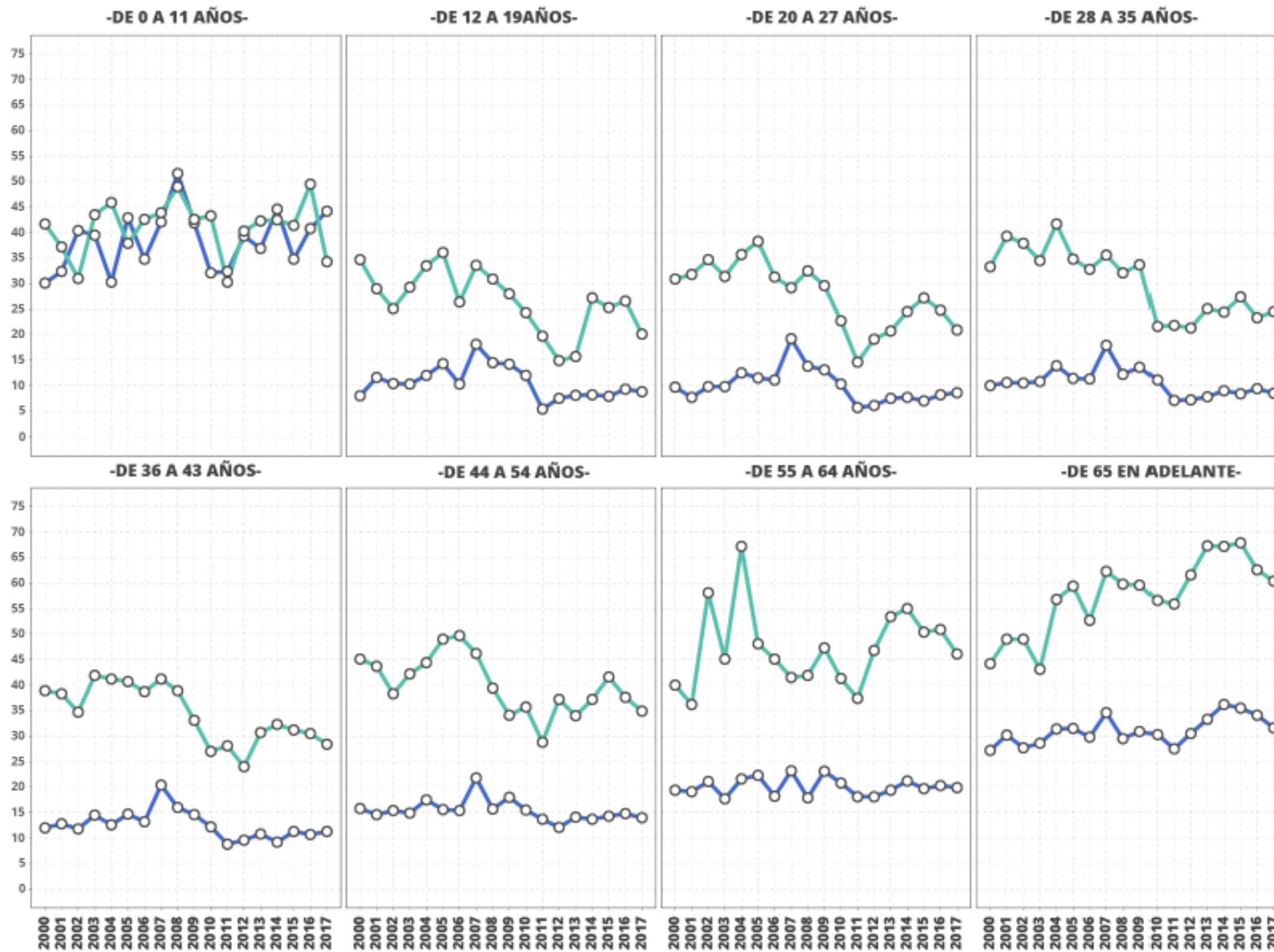


SOME DIFFERENCES REMAIN

Porcentaje de los homicidios cometidos en la vivienda

Según grupo de edad - de 2000 a 2017

Sexo de la víctima
— Hombre — Mujer



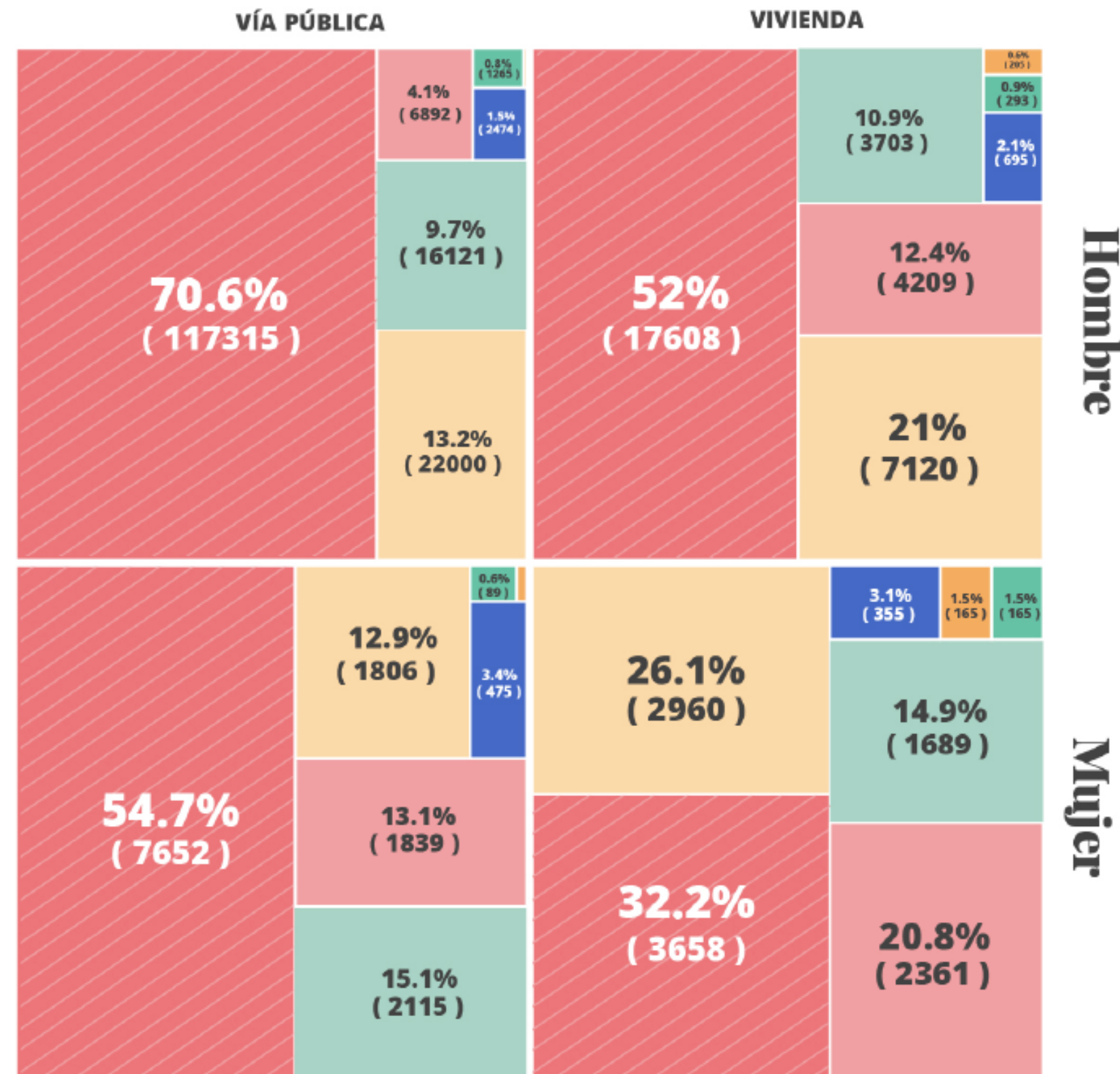
Proportionally more women are killed than men in their homes....

For adult women, their home is the most risky space.

SOME DIFFERENCES REMAIN

**Homicidios cometidos entre 2000 y 2017
según modo y lugar de ocurrencia**

Por sexo de la víctima



In proportion, women are more suffocated, stabbed, and more poisoned; they are also killed with bodily force and firearms.

LACK OF DATA

If we don't understand a problem, we can't solve it.

INCOMPLETE VARIABLES

"there was or was not family violence"

This variable is simply not included in 91.1% of homicides of women in the entire period analyzed.

"if there is a kinship between the victim and the alleged aggressor."

Variable that measures if the kinship is "consanguineous, marital, legal or customary." However, it is not included in 95.1% of homicides of women.

"whether or not the victim spoke an indigenous language."

Since 2012, the percentage of the registries for which there's no information available on this characteristic ranges from 57% to 37.5% of the total.

NON-EXISTENT VARIABLES

An effort is needed to record other characteristics that we know are potential risk factors, such as:

- People's sexual orientation.
- Their gender identity.
- Their skin color.
- Their immigration status
- Whether or not they have a disability.

NON-EXISTENT VARIABLES

There should also be variables that better describe who the victims are, who the aggressors are, and what the event was like.

- To identify victims who were killed in the same event.
- To know where the body was found (not only where the murder occurred).
- The number of perpetrators who allegedly committed the murder (as well as
- their sex, age, and relationship to each other's victim).
- If there were signs of aggressions prior to the murder.

INSTITUTIONAL DISABILITY

Increased militarization

- We have weak institutions.
- They lack human, financial and enough technological resources to act.
- They have complex bureaucratic lattices.
- There's a lack of transparency and accountability